

*Built for Microsoft Dynamics® AX*

vSync EDI was designed specifically for Microsoft Dynamics AX to take advantage of the system's dynamic data structures. vSync's access to these structures provide you with the power of accessible data the way you want to see it – regardless of how you modify Microsoft Dynamics AX.

## **BENEFITS**

- Manage EDI processing at multiple levels that are appropriate for your business and each of your customers
- Optimize and streamline operations by deploying exception management strategies
- Add new partners quickly and accurately in a fixed cost environment
- Manage customer requirements at a level that suits your business
- Easily accommodate changes on the fly



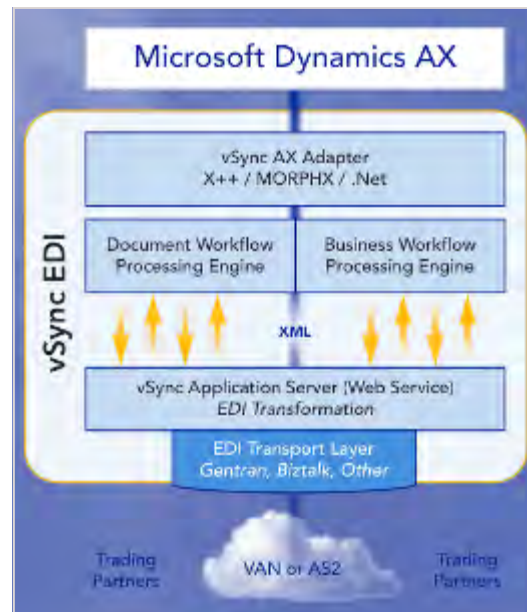
## BUILT FOR MICROSOFT DYNAMICS AX

One of the most valuable aspects of Microsoft Dynamics AX is its capacity to be customized for your business. Our development approach takes full advantage of XML and ensures that any customizations made to your system such as the addition of web services, new fields and new workflows; do not require reprogramming of the EDI system.

## PROCESS EDI INSIDE OF MICROSOFT DYNAMICS AX

vSync's drill back functionality enables you to view all data in human readable form for each EDI order. Historical data is always available for review, complete with the time stamping so users can track data at each step in the workflow.

Order ID	Date	Status	Order Type	Order Date	Order Time	Order Status	Order Type	Order Date	Order Time	Order Status
10410204	10/14	001	Standard	10/14	10:00	001	Standard	10/14	10:00	001
10410205	10/14	001	Standard	10/14	10:00	001	Standard	10/14	10:00	001
10410206	10/14	001	Standard	10/14	10:00	001	Standard	10/14	10:00	001
10410207	10/14	001	Standard	10/14	10:00	001	Standard	10/14	10:00	001
10410208	10/14	001	Standard	10/14	10:00	001	Standard	10/14	10:00	001
10410209	10/14	001	Standard	10/14	10:00	001	Standard	10/14	10:00	001
10410210	10/14	001	Standard	10/14	10:00	001	Standard	10/14	10:00	001
10410211	10/14	001	Standard	10/14	10:00	001	Standard	10/14	10:00	001
10410212	10/14	001	Standard	10/14	10:00	001	Standard	10/14	10:00	001
10410213	10/14	001	Standard	10/14	10:00	001	Standard	10/14	10:00	001
10410214	10/14	001	Standard	10/14	10:00	001	Standard	10/14	10:00	001
10410215	10/14	001	Standard	10/14	10:00	001	Standard	10/14	10:00	001
10410216	10/14	001	Standard	10/14	10:00	001	Standard	10/14	10:00	001
10410217	10/14	001	Standard	10/14	10:00	001	Standard	10/14	10:00	001
10410218	10/14	001	Standard	10/14	10:00	001	Standard	10/14	10:00	001
10410219	10/14	001	Standard	10/14	10:00	001	Standard	10/14	10:00	001
10410220	10/14	001	Standard	10/14	10:00	001	Standard	10/14	10:00	001

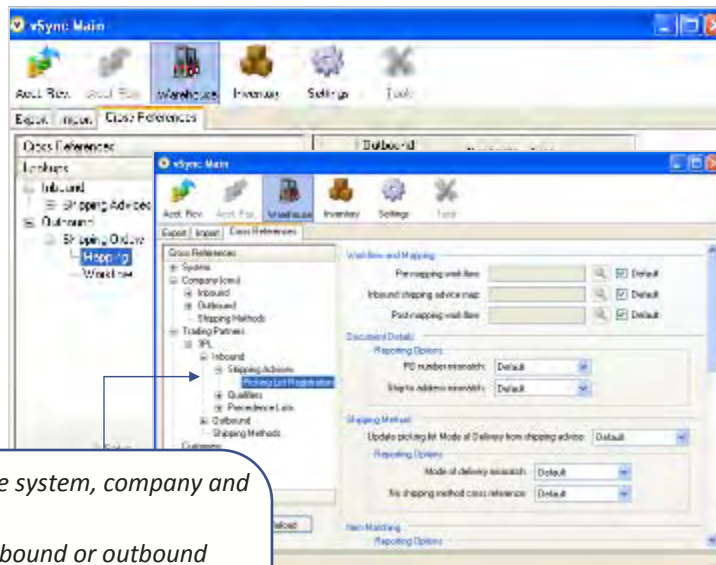


## CONFIGURABLE BUSINESS RULES ENHANCE PROCESSING SPEED AND ACCURACY

Same look and feel that users know and recognize

Configure business rules and cross references to set up "If...then" rules, or to tell the system when to flag orders for discrepancies such as price variances. vSync's EDI system provides custom cross references which are user-defined to alert you when specific business conditions occur such as drop ship orders, minimum order not met, etc.

Unattended processing features enable exception management for complete control and flexibility.



Detailed document process rules can be configured at the system, company and customer level.

At the **System level** universal rules are created for any inbound or outbound document entering the system.

**Company level** rules can be configured to differentiate document processes between your subsidiaries, divisions, regions, or countries.

Utilize **Customer level** rules to differentiate processes between customers.

Business rules can also be configured to override System or Company level rules.

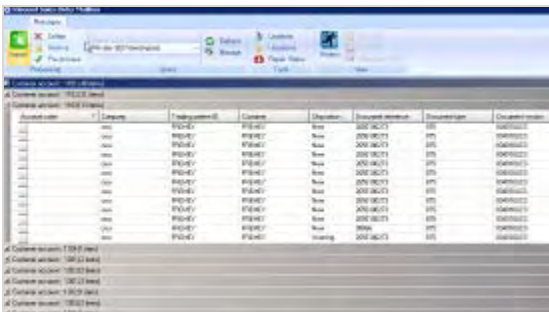
## MAXIMUM FLEXIBILITY AND CONTROL

System, Company or Customer level rules and can also be configured by item, by document, by ship-to location, and more.

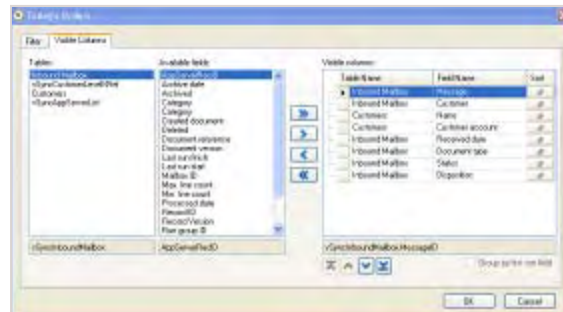


## CREATE USER DEFINED VIEWS THAT MATCH USER WORKFLOW

User defined views enable users to tell the system how they want to see data. Set up views to monitor document statuses, document types, documents from a specific trading partner, or documents for a specific time frame from a specific trading partner. vSync captures and stores all EDI document data making it available to view exactly the way a user wants to see it. Views are stored for easy recall when needed and can be company, customer or document specific.

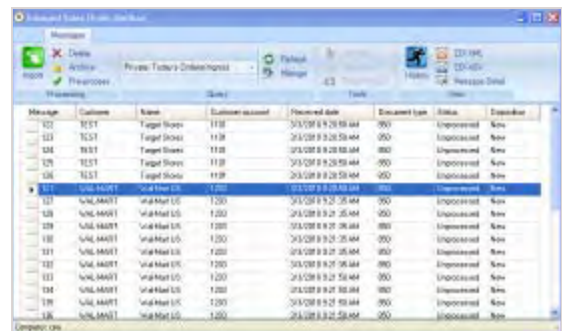


1) Filter the data you want to see



2) Select the order and columns to view

3) Customized view of today's orders



## INTEGRATED SHIPMENT PACKING AND ASN GENERATION

- Drive processes through configured business rules
- Quickly pack and verify shipments
- Build, and generate EDI ASNs
- Generate GS1 (UCC-128) Labels
- Pack multiple orders in a single shipment



## vSync EDI Compliance Solutions for Dynamics AX

### Additional Features

- Advanced Service Allowance Charge Handling (SAC) such as new store discounts and advertising can be captured at the order and line item level.
- Native support for advanced EDI applications such as Gentrans Server and \*BizTalk.
- Complete historical archive. Enhanced time stamping provides visibility as to when transactions were received, processed, or failed and facilitates “single source of truth” and faster rollbacks when required.
- Designed to accommodate customer deployed web services, and other workflow procedures using Visual Studio.
- Use of XML and XQuery provides ultimate flexibility to integrate non-EDI supply chain transactions into the vSync engine.
- Define and store inbound data required for outbound documents which may or may not be required for internal business flows.

### Additional Benefits

- Exceptional error checking and automated data transformations streamline processing and reduce charge-backs.
- vSync EDI can be used with most Value Added Networks (VAN) or AS2 software enabling full control of monthly traffic charges.
- Fixed cost trading partner implementations. vSync managed trading partner kits minimize mapping and accelerate implementation and testing processes. vSync manages an every growing library of more than 1,000 trading partner kits.
- Breadth and depth of configurable business rules enable true compliance without adding new code to the system or customizations. Configurations automate transaction handling, enhance exception management and optimize workflow regardless of complexity.
- Easy to learn and use – adopts many navigation components native to Microsoft Dynamics AX.
- Scalable, multi-company, multi-user access to manage the real needs and complexity of enterprise EDI requirements.

## Exceptional Comprehensive Support for Your EDI Needs

Companies that can easily and cost effectively meet unique customer requirements reduce cost, reduce errors, and improve competitive advantage. We believe to meet these objectives the EDI solution must be built specifically for the ERP system. The only way to optimize EDI processing is to match it to the way the business system was designed to handle supply chain processing. This approach provides enhanced support and service to our customers. Our staff understands your business, understands your business system, and understands your customer requirements.

### SYSTEM REQUIREMENTS

- Microsoft Dynamics AX 2009
- Microsoft SQL Server 2005 or 2008
- The GENTRAN family of translation products or Biztalk



Microsoft Business Solutions  
ISV/Software Solutions

625 East North Broadway  
Columbus, Ohio 43214  
614.261.0058 phone  
866.587.2666 fax  
[www.vsync.com](http://www.vsync.com)

